

FREUDE

OWNER'S MANUAL

FDK-165

EN

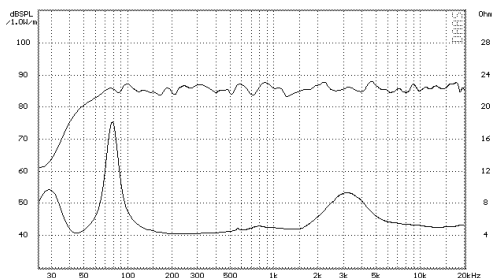
Thank you for purchasing our car speakers.

Please read this instructions carefully before using and make sure you know speaker connections very well.

Precautions

- Before making holes, check the mounting space with supplied template.
- To prevent noise keep the wiring away from motors, high-voltage leads and other potential noise sources.
- To prevent a short-circuit, keep all wiring away from moving parts and sharp edges.
- Make sure you carefully read and understand the installation instructions before installing the system in vehicle.

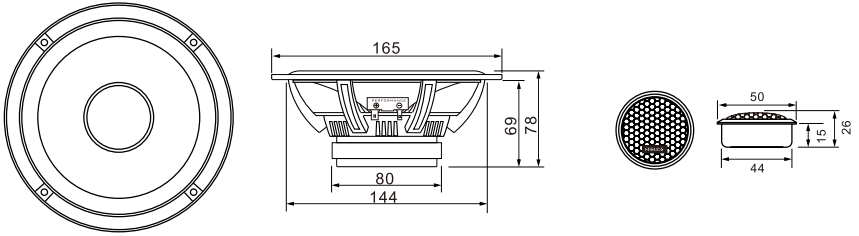
Frequency Response/Impedance



Product Specifications

- Type: 6.5" 2-Way Component Kit
- Max Power: 160 W
- Rms Power: 80 W
- Impedance: 4 Ohm
- Sensitivity(2.83V/1M): 90 dB
- Frequency Range: 48-20,000 Hz
- TF Dome: Silk Dome
- TF Voice Coil: 1" Wire Copper
- TF Magnet: Neodymium
- WF Basket: 6.5" Cast Aluminium With Gray Painting
- WF Cone: Fiberglass Cone With Rubber Surround
- WF Magnet: 10oz High Grade Ferrite

Product Dimensions



Connection Method

